

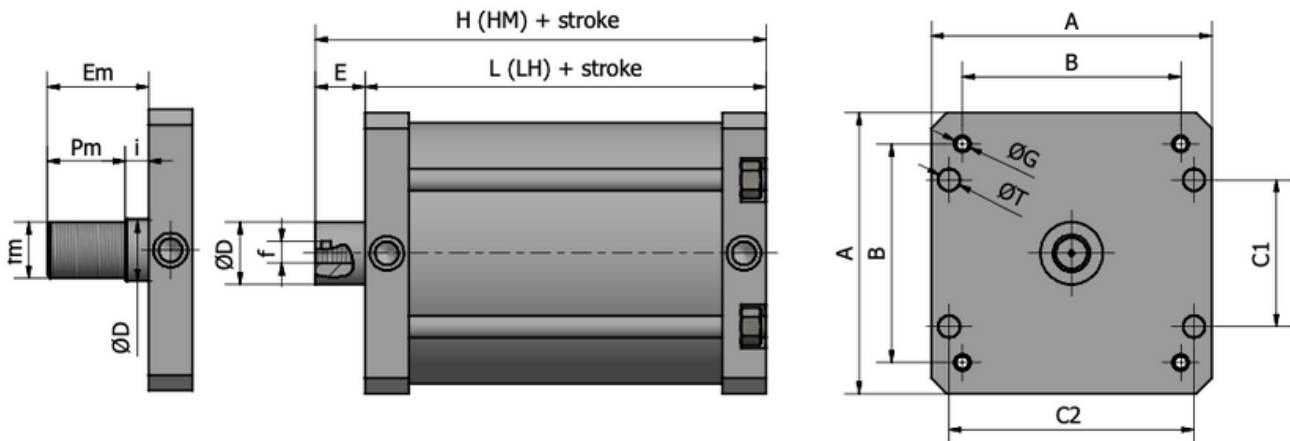
AER EXIG

CYLINDERS AEREXIG COMPACT

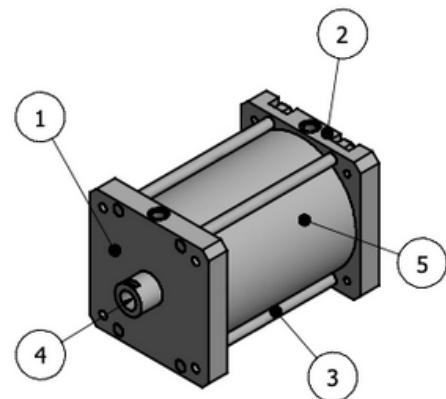
AEREXIG CYLINDER COMPACT ISO 15552 COMPATIBLE

AerExig giant compact cylinders, available with bores of 125, 160, 200 and 250mm, allow exertion of high thrust with considerably lower longitudinal dimensions than those on iso 6431 vdma 15552 cylinders. Double-acting, available in standard and through rod versions, with or without a magnetic ring. The heads have four threaded holes with centre-to-centre distance identical to that on iso 15552 cylinders, thus allowing use of the same accessories and optimising use of relative stocks. moreover, it is also possible to fix the cylinder directly to a machine. They are available with gaskets nbr and fkm / fpm, several piston rod diameters, double acting, single acting, with passing through piston rod and tandem. Front and rear heads are made from aluminium bar. AEREXIG borms as special cylinders, and therefore it retains total customization characteristics of all the dimensional parameters and material.

TECH DATA	d125	d160	d200	d250
connection thread GAS	1/4"	3/8"	3/8"	1/2"
Temp C^ NBR	-15 +70	-15 +70	-15 +70	-15 +70
Temp C^ FKM	-10 +150	-10 +150	-10 +150	-10 +150
F 7 bar N (out)	8576	14174	22007	29000
F 7 bar (in)	7889	13209	21134	28200
Weight 0 stroke	3,6	6,8	10,3	16



	d125	d160	d200	d250
A	140	180	220	270
B	110	140	175	220
C1	77	94	126	156
C2	122	157	193	220
E	30	40	40	50
Em	65	90	90	100
Pm	50	70	70	80
i	15	20	20	20
D	30	40	40	50
L	107	117	117	111
LH mag	123	138	138	111
H	137	157	157	161
HM mag	153	178	178	161
fm	M27x2	M36x2	M36x2	M42x2
f	M20x1.5	M27x2	M27x2	M27x2
T	M10	M14	M14	M18
G	13	17	17	21



ITEM	QTY	PART NUMBER	DESCRIPTION	CUSTOM
1	1	front head	raw aluminium	ANODIZED aluminium - INOX
2	1	rear head	raw aluminium	ANODIZED aluminium - INOX
3	4	tie rod	GALVANIZED Fe36/40	INOX
4	1	piston rod	chromed C40	INOX
5	1	tube	ANODIZED aluminium	INOX
6	1	GASKETS	NBR	FKM